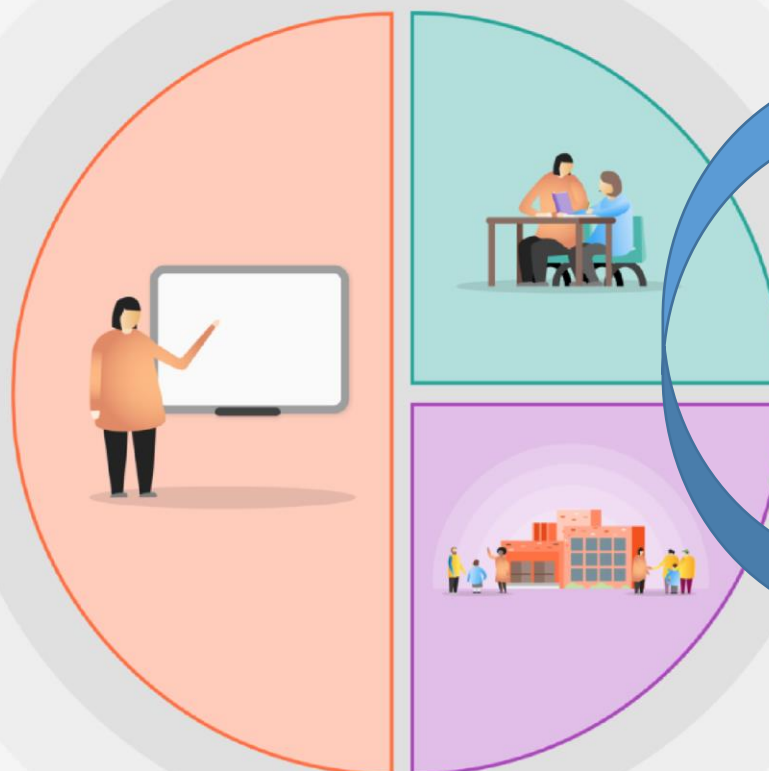


1 Teaching

- Quality first teaching supported by additional CPD for teachers and support staff. Focus on metacognition, Language for Learning and effective use of assessment.
- Developing quality feedback to support student learning.
- Increase support for PP students by keeping class sizes as small as possible – Very small group support with specialist teachers in English, Maths and Science available in Years 10 and 11 where specific need is identified.
- Improve attitude to reading through form time reading and the reading log as part of Enrichment and the Priory Passport
- Develop student vocabulary with a focus on Language for Learning across the Academy



2 Targeted academic support

- Specialist LSAs to support PP students in English and Maths.
- Use of baseline assessments, mentor meetings and module grade analysis to inform interventions and appropriate support plans.
- LSAs to mentor the most disadvantaged (PP and SEND)

3 Wider strategies

- Mentoring through Pastoral Learning Mentors – at least 2 meetings per academic year form the basis of subsequent support and intervention
- Support to improve attendance
- Provide access to counselling services
- Provide a high quality careers programme
- Financial support to enable PP students to access educational and culturally enhancing visits and extra-curricular activities.